

modern
1540

Modern Living. Mainstream Location.



Upscale modern apartments in the heart of Fayetteville
only steps from The University of Arkansas.

UNITS AVAILABLE NOW

modern1540.com

479.287.4599

leasing@oldbuildingsllc.com



Sleek, Sophisticated Living

Situated just off Razorback Road, Modern 1540 is Fayetteville's newest upscale residential community. It features 15 two-bedroom apartments with sleek, modern interiors and your own private outdoor living space. Beyond your doorstep lies the heart of Fayetteville. From the thrilling games at Baum Stadium and Bud Walton Arena to the peaceful trails and bustling attractions nearby, Modern 1540 ensures you're never far from where you want to be.

- **Designed for Modern Life:** 15 two-bedroom/two-bathroom and 1 one-bedroom/one-bathroom apartments.
- **Private Outdoor Havens:** All units come with their own private balconies or patios.
- **Convenience at Your Doorstep:** Two onsite laundry rooms with secure FOB access.
- **Lease Terms:** Flexible 12-month leases to fit your lifestyle.
- **Competitive Pricing:** Two-bedroom units are \$1,500/month, and one-bedroom units are \$1,100/month, with equal security deposits. Basic utilities, cable, and internet are included.
- **Pet-Friendly Options:** Select units welcome pets (subject to an additional deposit).

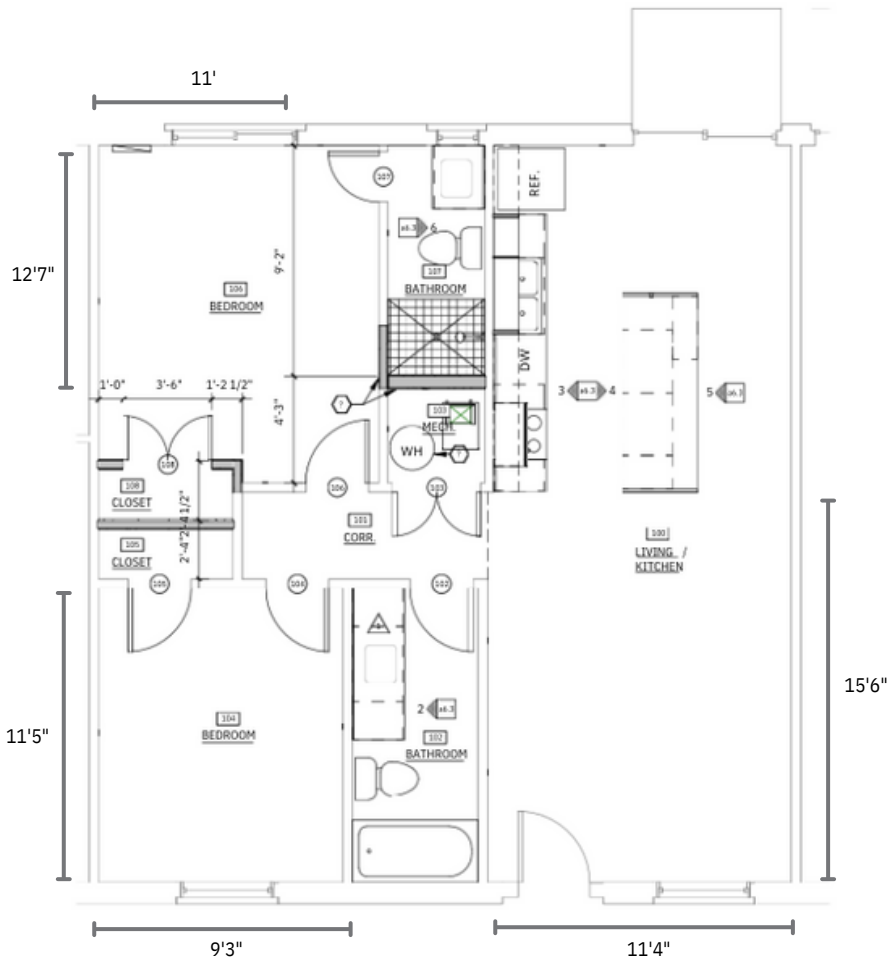
1540 Nettleship St. | Fayetteville, Arkansas
Steps from the University of Arkansas

For more information, call **479.287.4599** or email leasing@oldbuildingsllc.com

modern
1540

MAIN FLOOR PLAN: 2 BED / 2 BATH

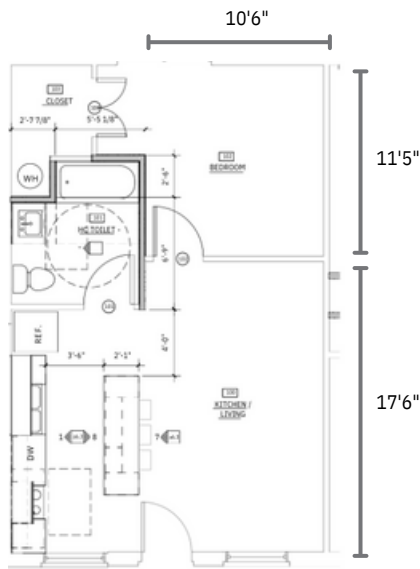
UNITS 1-4, 6-8, 9-11, 13-15



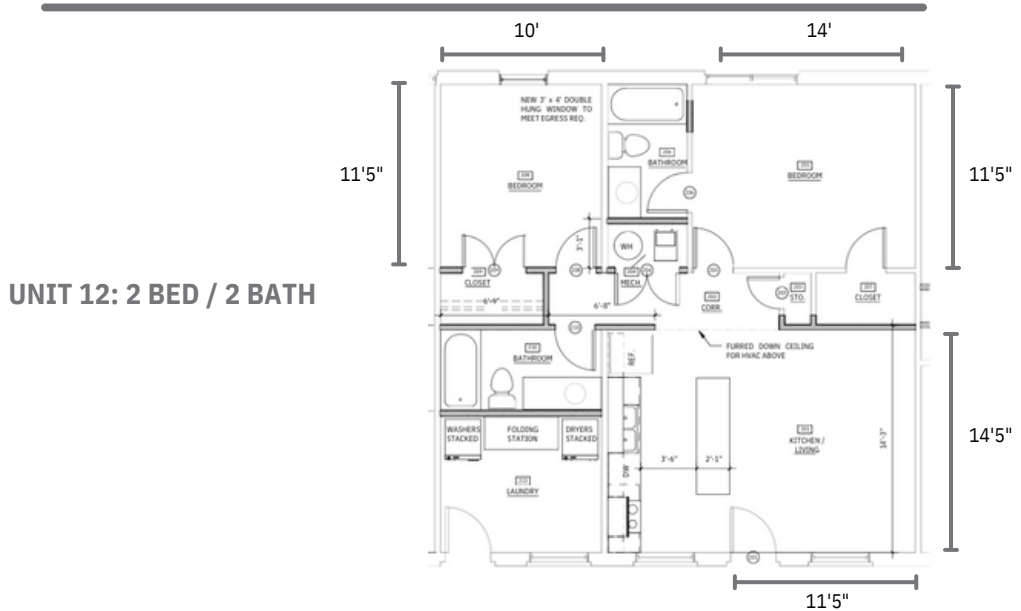
For more information, call 479.287.4599 or email leasing@oldbuildingsllc.com

modern 1540

FLOOR PLANS: UNIT 5, 12



UNIT 5: 1 BED / 1 BATH



UNIT 12: 2 BED / 2 BATH

For more information, call **479.287.4599** or email **leasing@oldbuildingsllc.com**